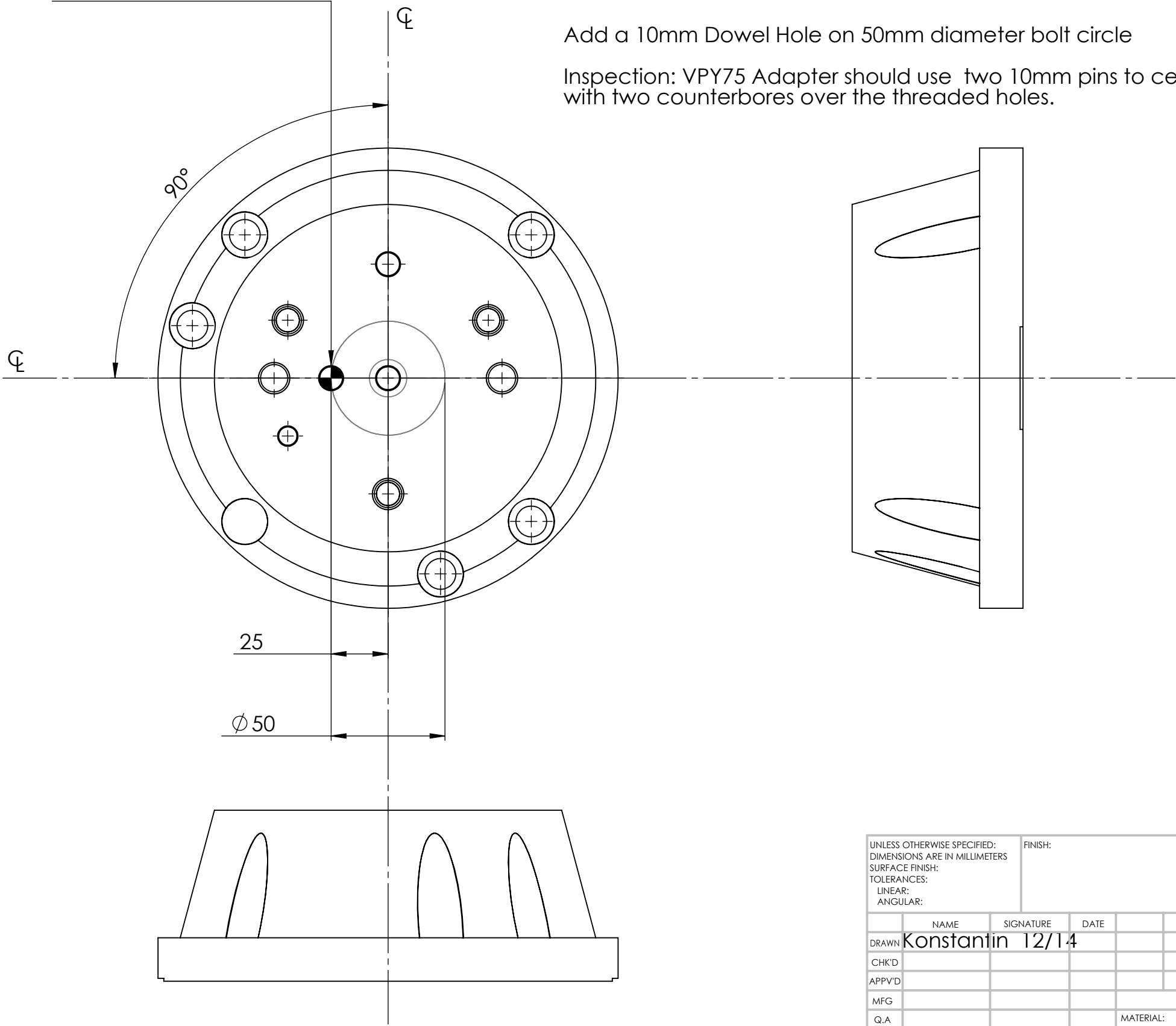


R347M Modification for VPY75 Setup

$\phi 10.0254$ $+0.0127$
 0 $\nabla 8.38$
 $\surd \phi 11 \times 90^\circ$, Near Side

Add a 10mm Dowel Hole on 50mm diameter bolt circle

Inspection: VPY75 Adapter should use two 10mm pins to center and clock the adapter in with two counterbores over the threaded holes.



UNLESS OTHERWISE SPECIFIED: DIMENSIONS ARE IN MILLIMETERS SURFACE FINISH: TOLERANCES: LINEAR: ANGULAR:				FINISH:		DEBURR AND BREAK SHARP EDGES	DO NOT SCALE DRAWING		REVISION		
DRAWN				NAME			SIGNATURE		DATE		
CHK'D											
APPV'D											
MFG											
Q.A											
				</							