

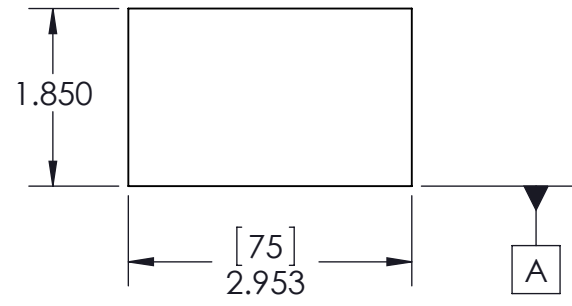
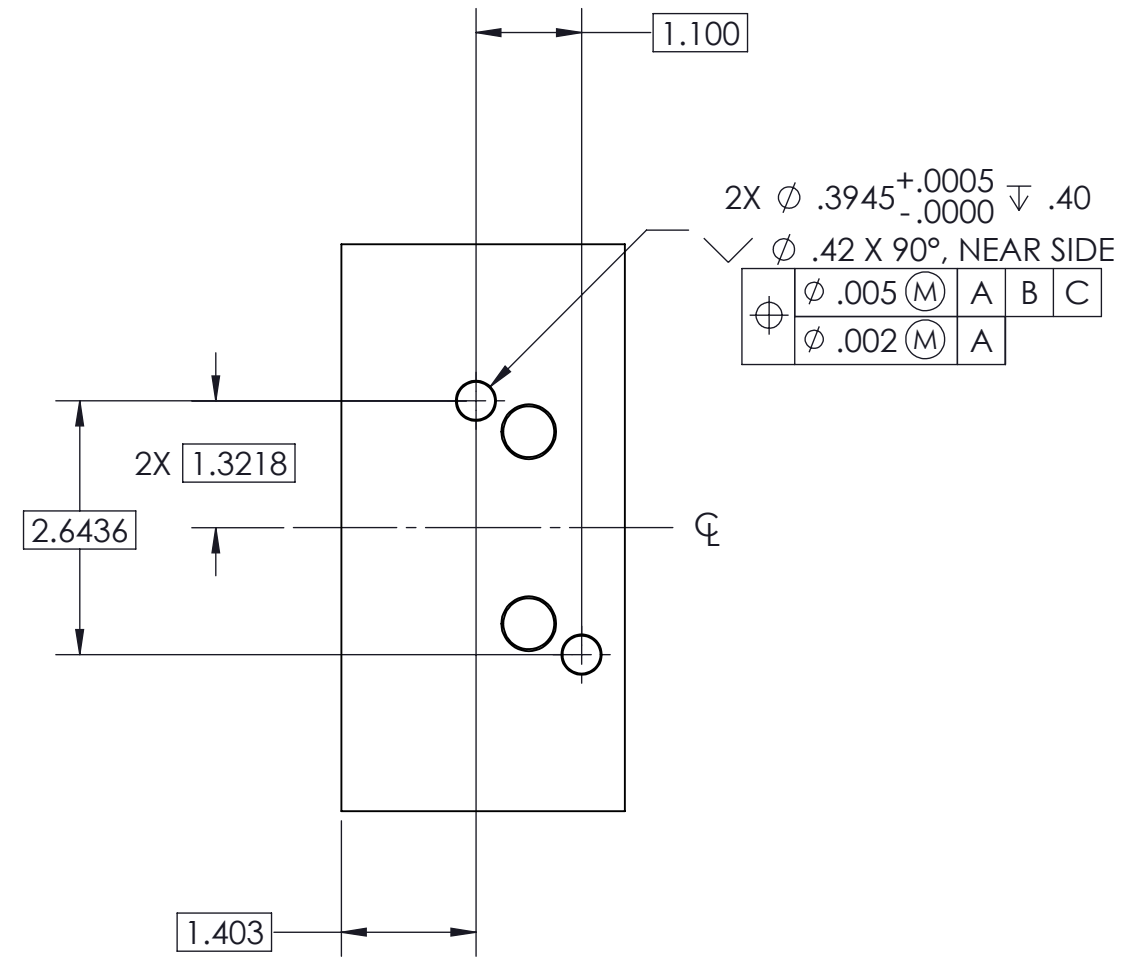
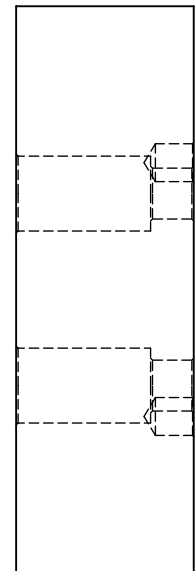
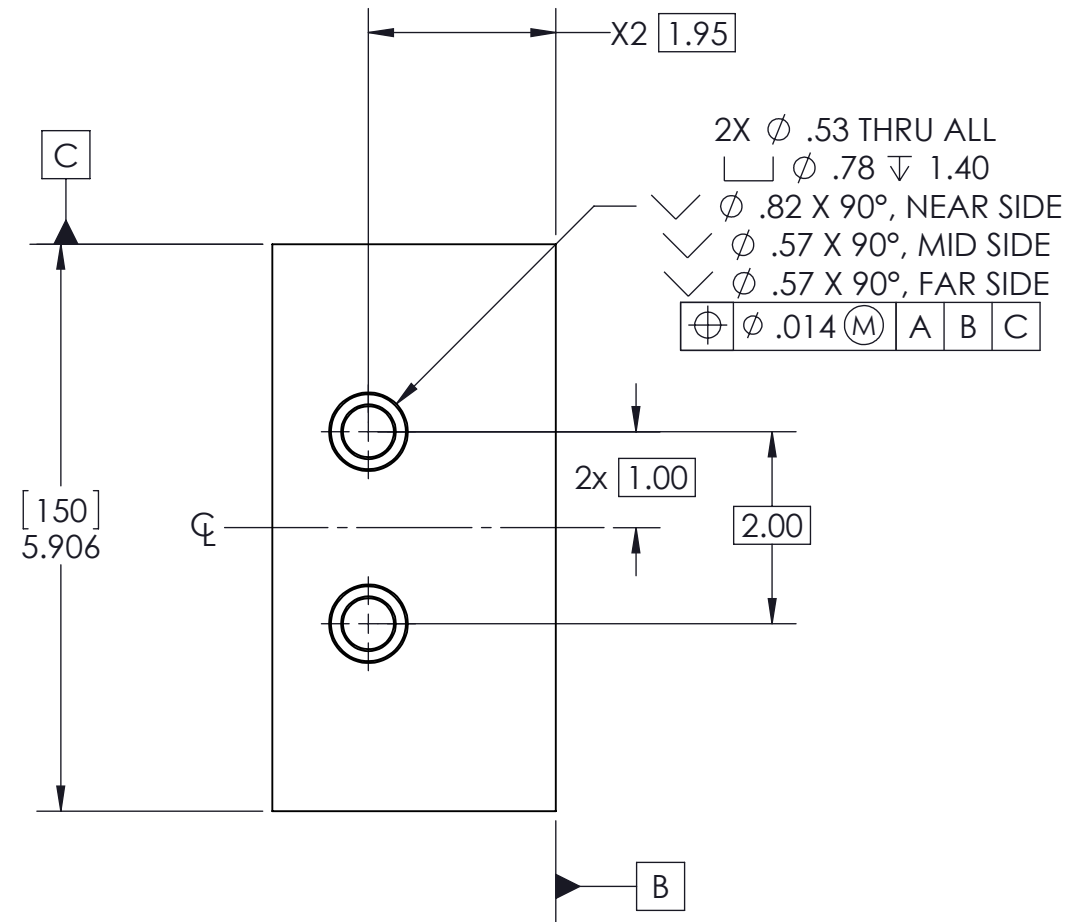
NOTES: UNLESS OTHERWISE SPECIFIED

1. APPLICABLE STANDARDS AND SPECIFICATIONS:
 - ASME.Y14.5.DIMENSIONING.AND.TOLERANCING.2009

② MATERIAL ALUMINIUM 6061 T6

③ FINISH:NONE

4. REMOVE ALL SHARP EDGES AND BURS .005 TO .020



5th AXIS[®] INC
 Automated Production Manufacturing & Production
 7140 ENGINEER ROAD, SAN DIEGO, CA 92111
 PH (858) 505-0432 FX (858) 505-0432

TOLERANCES		INCH	APPROVALS	
METRIC	INCH		DRAWN BY	LOGAN 2/13/2015
X ± 1.0	X ± 0.1	PROPRIETARY AND CONFIDENTIAL THE INFORMATION CONTAINED IN THIS DRAWING IS THE SOLE PROPERTY OF FIFTH AXIS, INC. ANY REPRODUCTION IN PART OR AS A WHOLE WITHOUT THE WRITTEN PERMISSION OF FIFTH AXIS, INC. IS PROHIBITED.	MFG. ENG.	
.X ± 0.3	.X ± 0.05		QA ENG.	
.XX ± 0.13	.XX ± 0.01		ENG. MGR.	CHRIS T. 2/4/2015
	.XXX ± 0.005		MATERIAL:	② THIRD ANGLE PROJECTION
	UNLESS OTHERWISE NOTED		FINISH:	③
ANGULAR DIMENSIONS ± 0.5°			WEIGHT:	2.986

CUSTOMER		DESCRIPTION	
		ALUMINIUM SOFT JAW, V6105M VISE	
SIZE	PART NO.	REV	
B	VAJ610M	-	
DO NOT SCALE DRAWING		SCALE 1:1	SHEET 1 OF 1