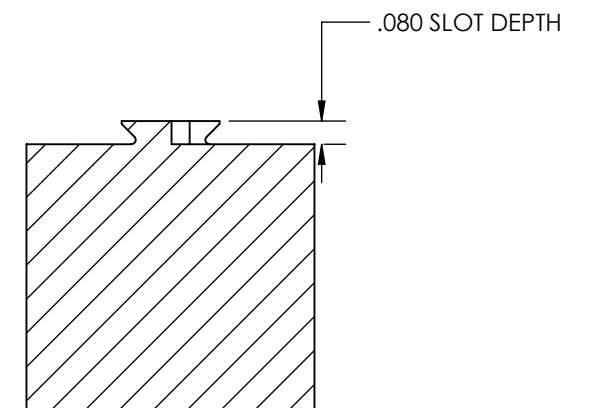
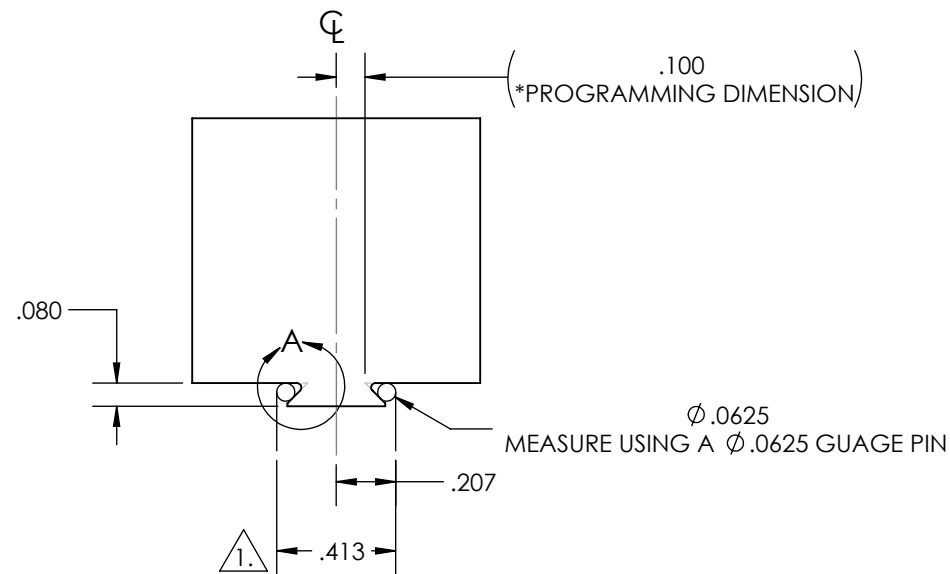
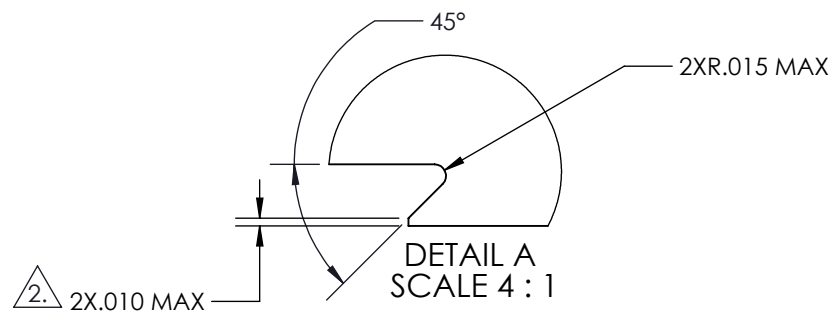


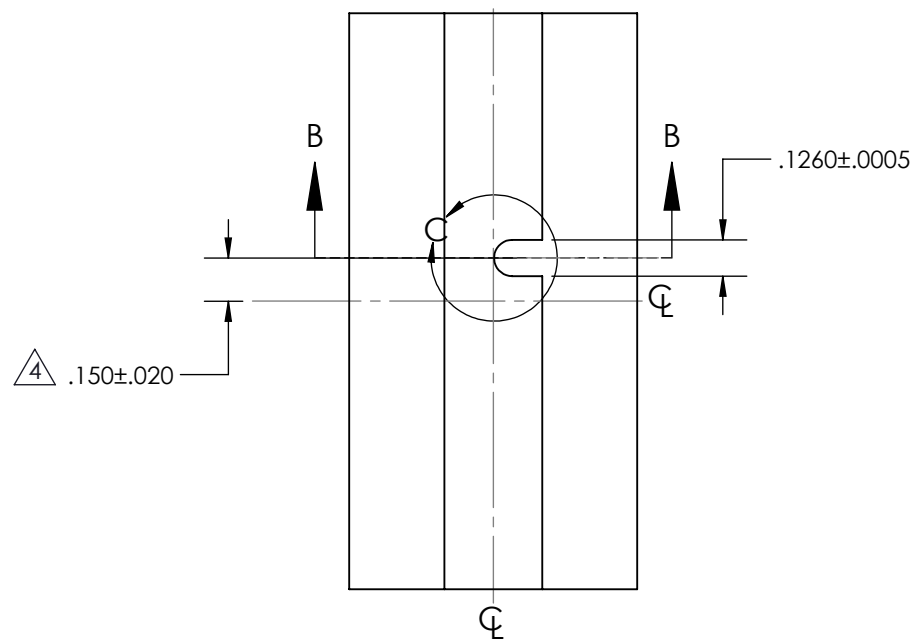
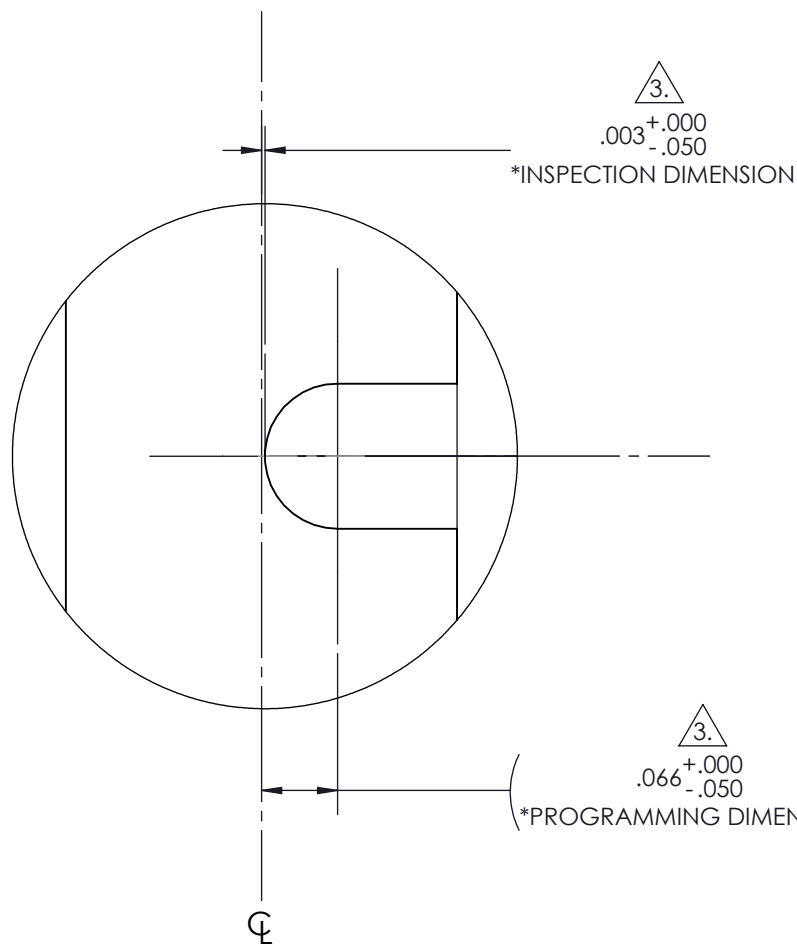
NOTES:

1. DOVETAIL WIDTH WILL NOT WILL NOT CHANGE WITH VARYING DOVETAIL DEPTH.
2. USE .010" EDGE BREAK ON DOVETAIL POINT.
3. SLOT DIMENSION TO THE CENTERLINE IS **CRITICAL**, IF DIMENSION IS TOO LARGE, STOCK MAY REST AGAINST LOCATING PIN INSTEAD OF DOVETAIL CUT SURFACES.
4. IF STOCK IS OVERSIZE, THIS TOLERANCE INCREASES BY HALF OF THE EXTRA STOCK.

D051251WM: DOVETAIL STOCK PREPARATION



SECTION B-B
SCALE 1.5 : 1



TOLERANCES	
METRIC	INCH
X ± 1.0	X ± 0.1
.X ± 0.3	.X ± 0.05
.XX ± 0.13	.XX ± 0.01
	.XXX ± 0.005
UNLESS OTHERWISE NOTED	
ANGULAR DIMENSIONS ± 0.5°	

INCH
PROPRIETARY AND CONFIDENTIAL
THE INFORMATION CONTAINED IN THIS DRAWING IS THE SOLE PROPERTY OF FIFTH AXIS, INC. ANY REPRODUCTION IN PART OR AS A WHOLE WITHOUT THE WRITTEN PERMISSION OF FIFTH AXIS, INC. IS PROHIBITED.

APPROVALS	
DRAWN BY: DANM	12/08/2014
MFG. ENG.	
QA ENG.	
ENG. MGR.	
MATERIAL:	THIRD ANGLE PROJECTION
FINISH:	
WEIGHT:	

5thAXIS[®]
7140 ENGINEER ROAD, SAN DIEGO, CA 92111
PH (858) 505-0432 FX (858) 505-0432

DESCRIPTION	DOVETAIL STOCK PREPARATION
SIZE	B
PART NO.	DSP-D051251WM
REV	A
DO NOT SCALE DRAWING	SCALE 1:1
SHEET 1 OF 1	