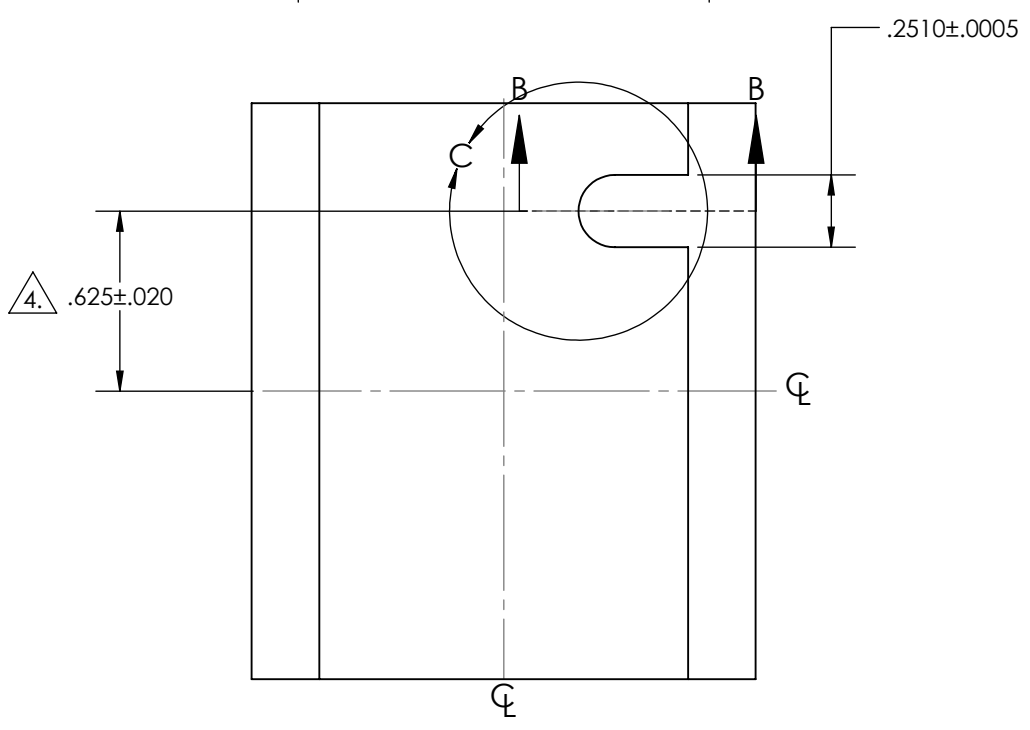
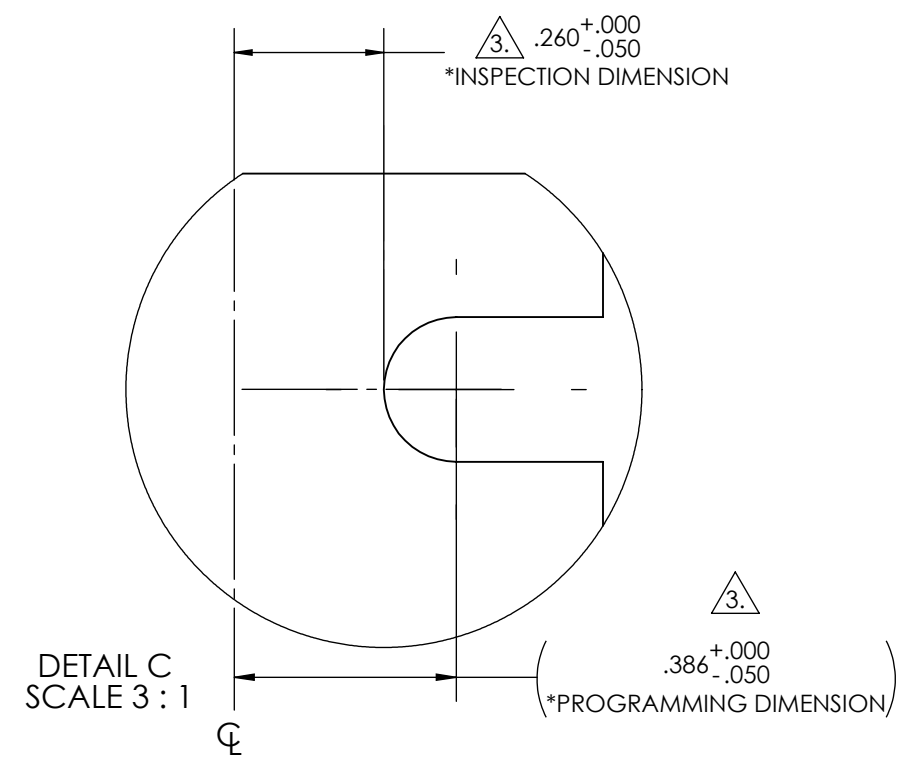
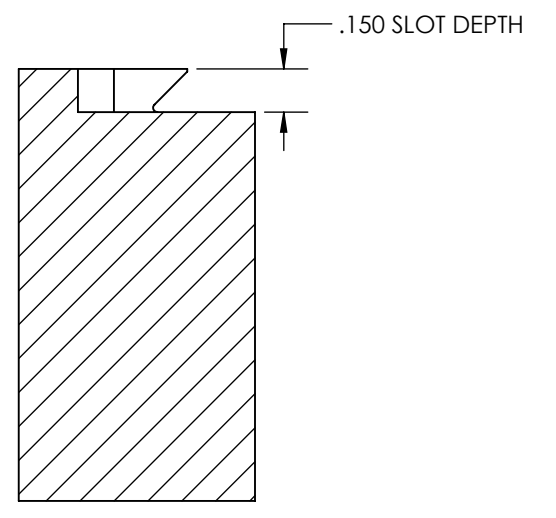
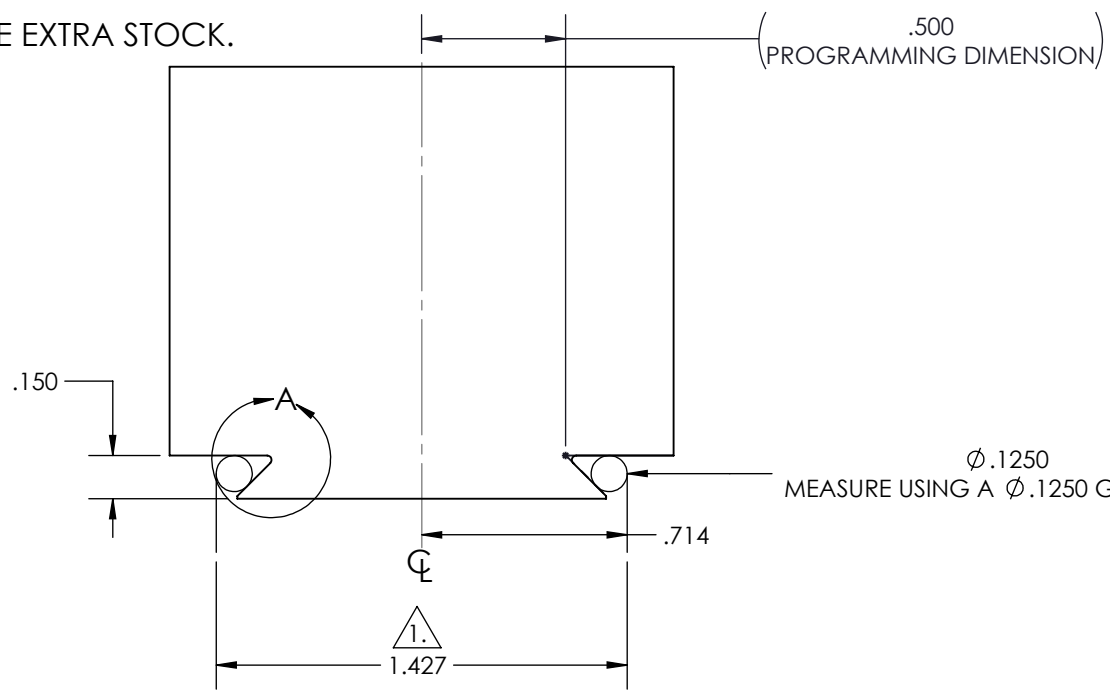
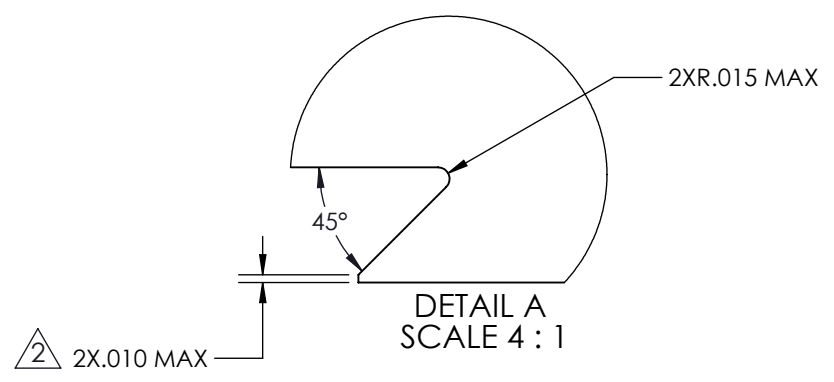


# NOTES:

1. DOVETAIL WIDTH WILL NOT WILL NOT CHANGE WITH VARYING DOVETAIL DEPTH.
2. USE .010" EDGE BREAK ON DOVETAIL POINT.
3. SLOT DIMENSION TO THE CENTERLINE IS **CRITICAL** , IF DIMENSION IS TOO LARGE, STOCK MAY REST AGAINST LOCATING PIN INSTEAD OF DOVETAIL CUT SURFACES.
4. IF STOCK IS OVERSIZE, THIS TOLERANCE INCREASES BY HALF OF THE EXTRA STOCK.

# D221M: DOVETAIL STOCK PREPARATION



**5<sup>th</sup>AXIS.**  
7140 ENGINEER ROAD, SAN DIEGO, CA 92111  
PH (858) 505-0432 FX (858) 505-0432

TOLERANCES		INCH	APPROVALS	
METRIC	INCH		DRAWN BY	D ROBLER 10/8/2014
X ± 1.0	X ± 0.1	<b>PROPRIETARY AND CONFIDENTIAL</b> THE INFORMATION CONTAINED IN THIS DRAWING IS THE SOLE PROPERTY OF FIFTH AXIS, INC. ANY REPRODUCTION IN PART OR AS A WHOLE WITHOUT THE WRITTEN PERMISSION OF FIFTH AXIS, INC. IS PROHIBITED.	MFG. ENG.	
.X ± 0.3	.X ± 0.05		QA ENG.	
.XX ± 0.13	.XX ± 0.01		ENG. MGR.	
	.XXX ± 0.005		MATERIAL:	
UNLESS OTHERWISE NOTED		FINISH:	THIRD ANGLE PROJECTION	
ANGULAR DIMENSIONS ± 0.5°		WEIGHT:		

CUSTOMER: \_\_\_\_\_

DESCRIPTION: **DSP-D221M REV A DOVETAIL STOCK PREP**

SIZE: **B** PART NO: **DSP-D221M** REV: **A**

DO NOT SCALE DRAWING SCALE 1:1 SHEET 1 OF 1