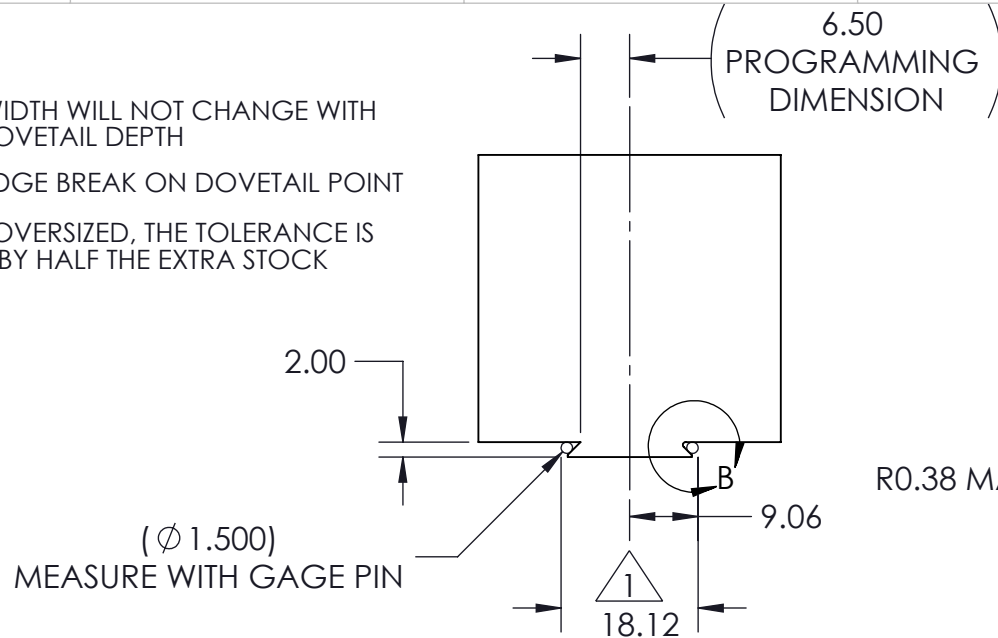


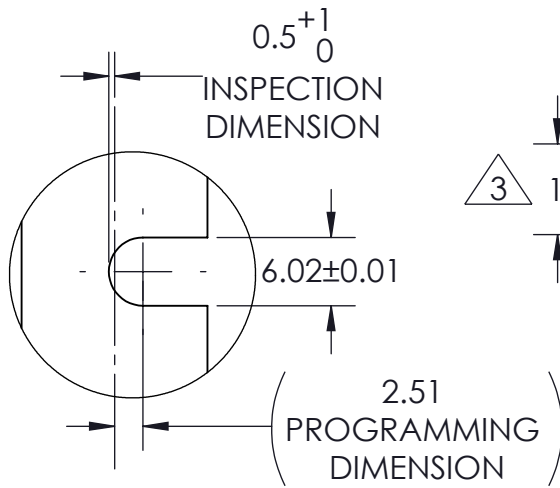
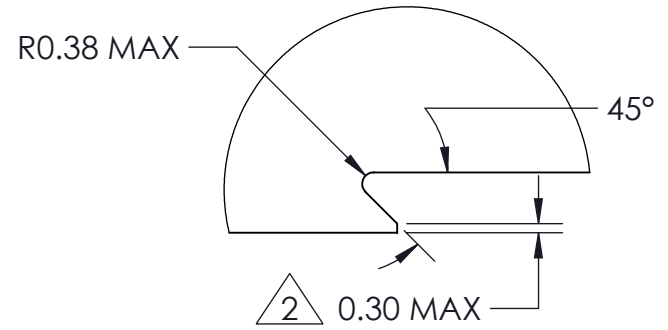
NOTES:

- 1. DOVETAIL WIDTH WILL NOT CHANGE WITH VARYING DOVETAIL DEPTH
- 2. MACHINE EDGE BREAK ON DOVETAIL POINT
- 3. IF STOCK IS OVERSIZED, THE TOLERANCE IS INCREASED BY HALF THE EXTRA STOCK

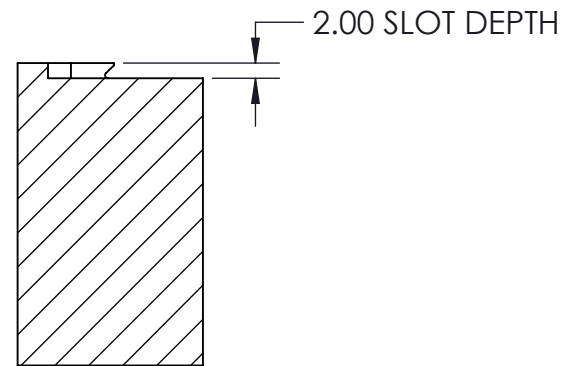
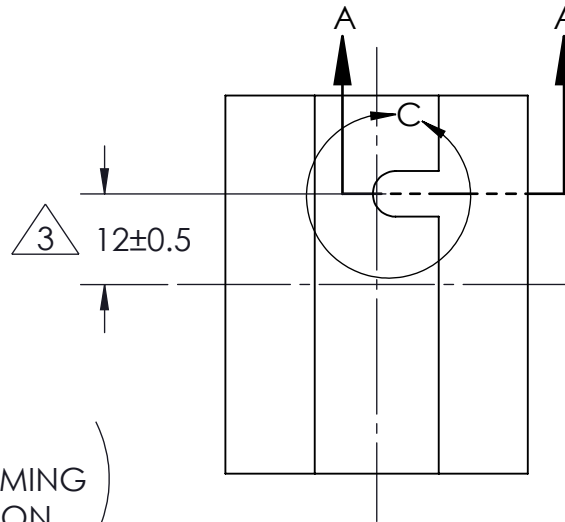
DM25 DOVETAIL STOCK PREPARATION



DETAIL B
SCALE 4 : 1



DETAIL C
SCALE 1.5 : 1



SECTION A-A

MILLIMETER <small>DRAWN IN ACCORDANCE WITH ASME Y14.5-2009</small> PROPRIETARY AND CONFIDENTIAL <small>THE INFORMATION CONTAINED IN THIS DRAWING IS THE SOLE PROPERTY OF FIFTH AXIS, INC. ANY REPRODUCTION IN PART OR AS A WHOLE WITHOUT THE WRITTEN PERMISSION OF FIFTH AXIS, INC. IS PROHIBITED.</small>	TOLERANCES <small>UNLESS OTHERWISE SPECIFIED</small> X ± 1 .XX ± 0.13 .X ± 0.3 ANGULAR ± 0.5°	APPROVALS DRAWN BY: A.LANE MANUFACTURING: 09/18/17			WWW.FIFTHAXIS.COM 7140 ENGINEER ROAD SAN DIEGO, CA 92111 P (858) 505-0432 F (858) 505-9344
	<small>THRID ANGLE PROJECTION</small> 	QUALITY: _____ FINAL: _____	DESCRIPTION: DM25 DOVETAIL STOCK PREP		
		SIZE: A PART NO.: DSP-DM25	WEIGHT: _____	REV: A	SHEET 1 OF 1