



5th AXIS[®]

Etaux auto-centrant

Manuel



MADE IN
USA 

- Mode d'emploi
- Entretien & maintenance
- Informations de garantie

Recommended Torque Specifications

V75100

Couple maximum d'assemblage : **45 ft lbs (61.01 Nm)**

Couple maximum des vis de mors : **25 ft lbs (33.90 Nm)**

Force de serrage Effective : **3100 lbs @ 45 ft lbs (13.5 kN @ 61.01 Nm)**

V562 & V552

Couple maximum d'assemblage : **55 ft lbs (74.57 Nm)**

Force de serrage Effective : **3600 lbs @ 45 ft lbs (16.01 kN @ 61.01 Nm)**

V6105

Couple maximum d'assemblage : **75 ft lbs (101.69 Nm)**

Force de serrage Effective : **3600 lbs @ 45 ft lbs (16.01 kN @ 61.01 Nm)**

General Instructions - Instructions Générales

- L'utilisation d'une clé dynamométrique est fortement recommandée
- Ne pas dépasser les spécifications de couple maximal
- Couple sur les têtes à six pans (M12) de 35 ft lbs (47.45Nm)
pour les V562/V552 et 50 ft lbs (67.79 Nm) pour le V6105

Additional Information

Pour télécharger de fichiers et les informations de compatibilité, allez sur notre site à l'adresse :

www.fifthaxis.com

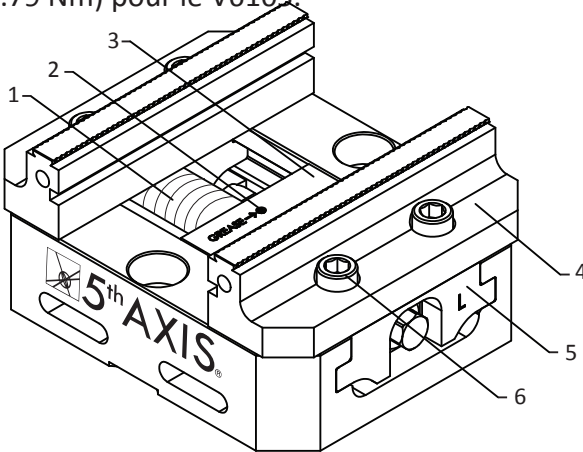
Voir nos produits en fonctionnement :

www.youtube.com/5thaxisfixtures

Garder la vis mère propre et revêtue d'anti-grippage. Utilisez un chiffon doux et une brosse métallique pour nettoyer les copeaux et les débris sur la vis (1). Après l'avoir nettoyée, réappliquer une couche d'anti-grippage sur la vis, veiller à ce qu'une couche uniforme couvre les filets. Nous recommandons, l'utilisation d'un anti-grippant à base de cuivre.

Gardez la noix de vis rempli avec de la graisse. Retirer la vis de graisse (2) qui se trouve au-dessus du bloc (3). Ajouter la graisse à travers le trou où la vis vient d'être retirée. Rappelez-vous de lubrifier régulièrement et autant de fois que nécessaire ce point de lubrification. La graisse utilisée dans le bloc central résiste aux pressions extrêmes de lubrifiant.

Lors de l'installation des mors sur l'étau, localiser les mors (4) sur le guide (5) en utilisant les pions de positionnement. Une fois que les mors montés fermer légèrement l'étau sur des calles pour veiller à ce que les deux surfaces de préhension restent parallèles. Une fois l'étau fermé, saisir délicatement l'ensemble, vissez les vis des mors (6) en utilisant 25 ft-lbs (33.90 Nm) pour le V75100, 35 ft-lbs (47.45 Nm) pour les V562/V552 et 50 ft-lbs (67.79 Nm) pour le V6105.

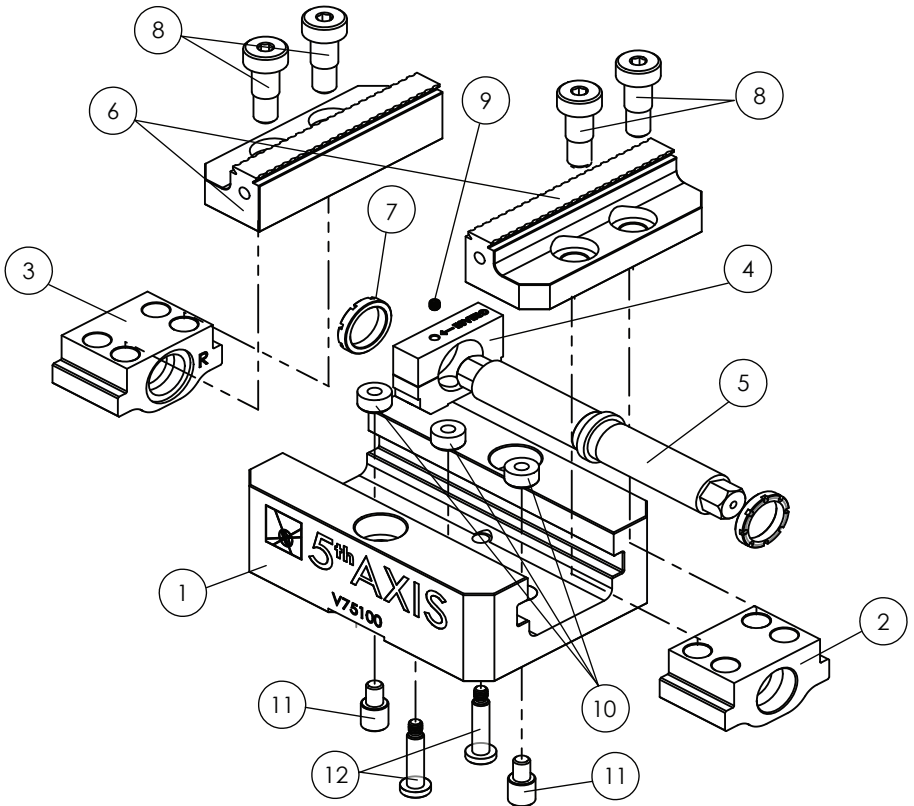


Accessories

- Mors en Acier usinable
- Mors en Aluminium usinable
- Mors de remplacement
- Fraise à queue d'aronde
- Embases et rehausses
- Pions de localisation
- ½-13 Vis d'adaptation à tête creuse
- Clé dynamométrique

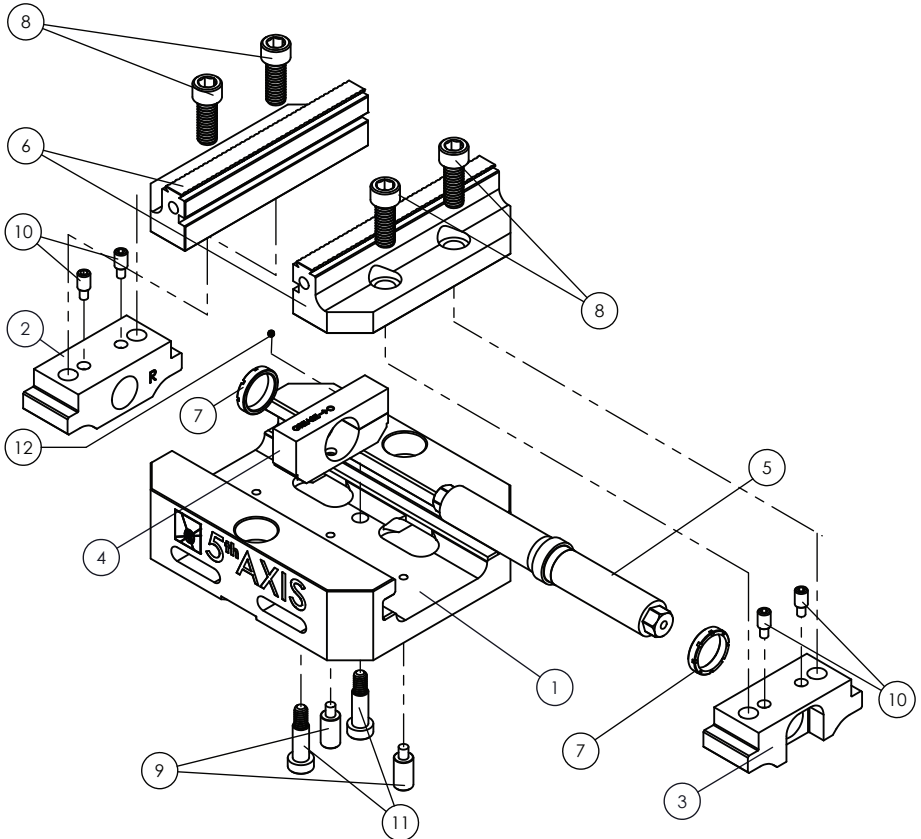
Replacement Parts: V75100

ITEM NO.	PART NUMBER	DESCRIPTION	QTY.
1	V75100-1	WISE BASE, 75mm 5 AXIS VISE	1
2	V75100-2R	TRUCK, RIGHT, 75mm 5 AXIS VISE	1
3	V75100-2L	TRUCK, LEFT, 75mm 5 AXIS VISE	1
4	V75100-3	CENTER BLOCK, 75mm 5 AXIS VISE	1
5	V75100-4	LEAD SCREW, 75mm 5 AXIS VISE	1
6	V75100-5	WISE JAW, 75mm 5 AXIS VISE	2
7	V75100-6	CENTER BLOCK RING, 75mm 5 AXIS VISE	2
8	V75100-7	8mm M7 SHOULDER BOLT	4
9	V75100-8	M3 x 3 SET SCREW	1
10	TIM-34	THREADED METRIC INSERT	3
11	LPM8	8mm THREADED LOCATING PIN	2
12	V75100-9	5mm M4 SHOULDER BOLT	2
	V75100-4RK	LEAD SCREW REPLACEMENT KIT, 75mm 5AXIS VISE (1 x V75100-4, 1 x V75100-3, 2 x V75100-6)	



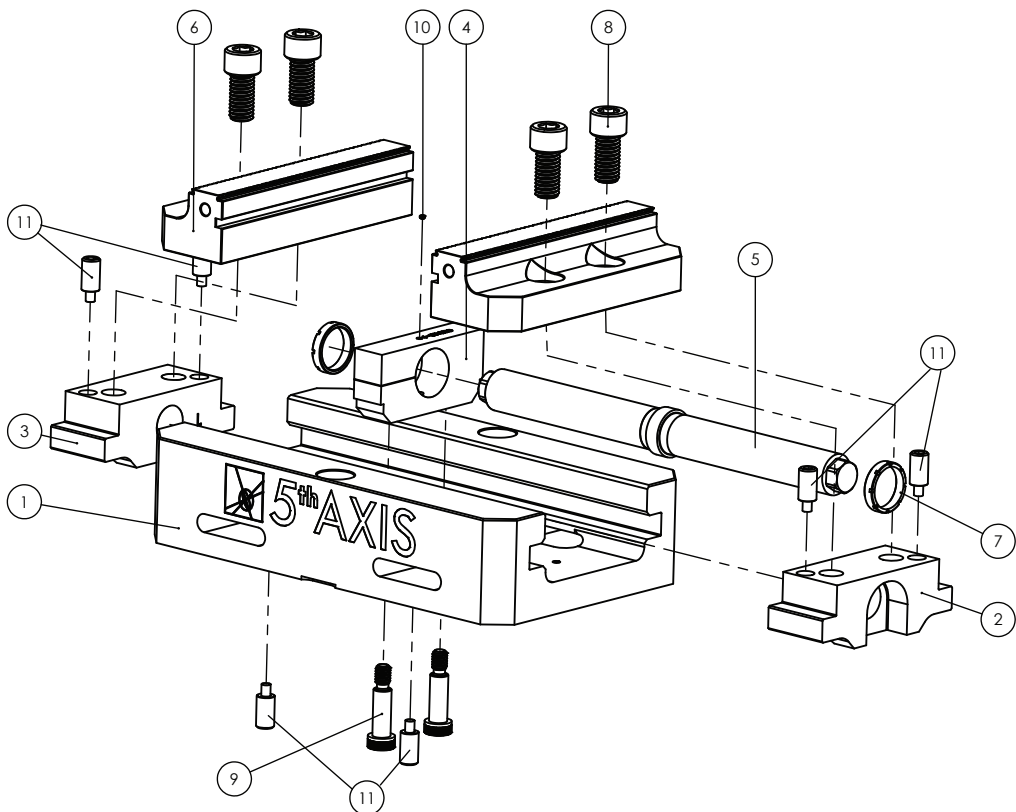
Replacement Parts: V562/V552

ITEM NO.	PART NUMBER	DESCRIPTION	QTY.
1	V56124-1/V552-1	VICE BASE, 5 IN 5 AXIS VISE	1
2	V56124-2R	TRUCK, RIGHT, 5IN 5 AXIS VISE	1
3	V56124-2L	TRUCK, LEFT, 5IN 5 AXIS VISE	1
4	V56124-3	CENTER BLOCK, 5IN 5 AXIS VISE	1
5	V56124-4	LEAD SCREW, 5IN 5 AXIS VISE	1
6	V56124-5	VICE JAW, 5IN 5 AXIS VISE	2
7	V56124-6	CENTER BLOCK RING, 5IN 5 AXIS VISE	2
8	V56124-7	3/8-16 X 1.00 SHCS	4
9	LP375	.375 THREADED LOCATING PIN	2
10	LP250	.250 THREADED LOCATING PIN	4
11	V56124-8	5/16 X .75 SHOULDER BOLT	2
12	V56124-9	4-40 X .094 SET SCREW	1
	V56124-4RK	LEAD SCREW REPLACMNT KIT, 5IN 5AXIS VISE (1 x V56124-4, 1 x V56124-3, 2 x V56124-6)	



Replacement Parts: V6105

ITEM NO.	PART NUMBER	DESCRIPTION	QTY.
1	V6105-1	WISE BASE, 6IN 5 AXIS VISE	1
2	V6105-2R	TRUCK, RIGHT, 6IN 5 AXIS VISE	1
3	V6105-2L	TRUCK, LEFT, 6IN 5 AXIS VISE	1
4	V6105-3	CENTER BLOCK, 6IN 5 AXIS VISE	1
5	V6105-4	LEAD SCREW, 6IN 5 AXIS VISE	1
6	V6105-5	WISE JAW, 6IN 5 AXIS VISE	2
7	V6105-6	CENTER BLOCK RING, 6IN 5 AXIS VISE	2
8	V6105-7	1/2-13 X 1.00 SHCS	4
9	V6105-8	3/8 X 1.00 SHOULDER BOLT	2
10	V6105-9	4-40 X .094 SOCKET HEAD SET SCREW	1
11	LP375	.375 LOCATING PIN	6
	V6105-4RK	LEAD SCREW REPLACEMENT KIT, 6IN 5AXIS VISE (1 x V6105-4, 1 x V6105-3, 2 x V6105-6)	



Warranty

All 5th Axis Inc. Workholding products are warranted against defects in material and workmanship for (1) year. Products deemed defective during the (1) year period shall be replaced without charge providing such defect is due to faulty material or workmanship and not caused by tampering, abuse, misapplication or improper installation. Failure to properly maintain and/or properly operate the product or part under normal conditions will void this warranty. This warranty does not cover any product or part that has been: worn out; abused; heated; ground or otherwise altered; used for a purpose other than that for which it was intended; or used in a manner inconsistent with any instructions regarding its use. Should a piece of equipment require major component replacement or repair during the warranty period, it will be handled in one of two ways:

1. If the Purchaser elects to take the responsibility of repairing the equipment and requests replacement part(s), the Purchaser or Sales Representative must contact the Factory for return authorization and a purchase order must be issued. Replacement part(s) will be promptly shipped and invoiced. The defective part(s) must be returned to the factory for inspection. If the defect(s) were due to faulty material or workmanship, credit will be issued to the customer.

2. The equipment can be returned to the 5th Axis factory to have the inspections, parts replacements and testing performed by factory personnel. Should it be necessary to return a piece of equipment or parts to the factory, the customer or sales representative must obtain authorization from the factory. If upon inspection at the factory, the defect was due to faulty material or workmanship, all repairs will be made at no cost to the customer during the warranty period.

5th Axis shall be limited to the replacement or repair of any 5th Axis product or part provided that such an item is returned to 5th Axis, transportation, shipping and postal charges prepaid, and there determined by 5th Axis to be covered by the warranty contained herein. The customer will assume all risk of loss or damage to product while in transit to 5th Axis.

THE ABOVE WARRANTY IS EXCLUSIVE, SUPERCEDES AND IS IN LIEU OF ALL OTHER WARRANTIES, EXPRESSED OR IMPLIED, INCLUDING ANY IMPLIED WARRANTY OF MERCHANTABILITY OR FITNESS. NO PERSON, AGENT OR DEALER IS AUTHORIZED TO GIVE ANY WARRANTIES ON BEHALF OF THE MANUFACTURER, OR TO ASSUME FOR THE MANUFACTURER ANY OTHER LIABILITY IN CONNECTION WITH ANY OF ITS PRODUCTS UNLESS MADE IN WRITING AND SIGNED BY AN OFFICIAL OF THE MANUFACTURER.

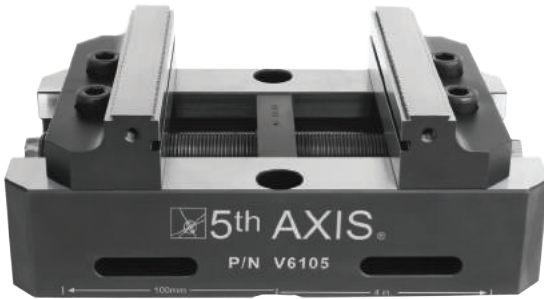


5th AXIS[®]



5th AXIS[®]

Solutions de bridage pour 3, 4 et 5 axes
Pour CU verticaux et horizontaux



As seen on "How it's Made."

Visitez notre site Web pour, télécharger
et voir nos produits de serrage supplémentaires,
ainsi que les accessoires.

www.fifthaxis.com



@5thaxis



facebook.com/
5thaxisfixtures



youtube.com/
5thaxisfixtures



@fifthaxis

7140 Engineer Rd. San Diego, CA 92111

Tel: 858-505-0432 Fax: 858-505-9344

email: sales@fifthaxis.com



Made in the U.S.A.