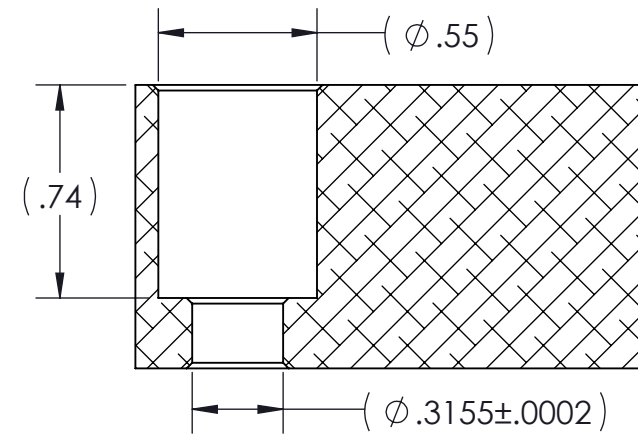


NOTES: UNLESS OTHERWISE SPECIFIED

1. APPLICABLE STANDARDS AND SPECIFICATIONS:
 - ASME.Y14.5.DIMENSIONING.AND.TOLERANCING.2009
- 2 MATERIAL: ALUMINIUM 6061 T6
- 3 FINISH: NONE
4. REMOVE ALL SHARP EDGES AND BURRS .005 TO .020

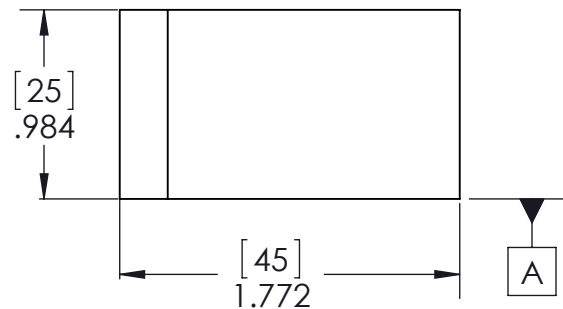
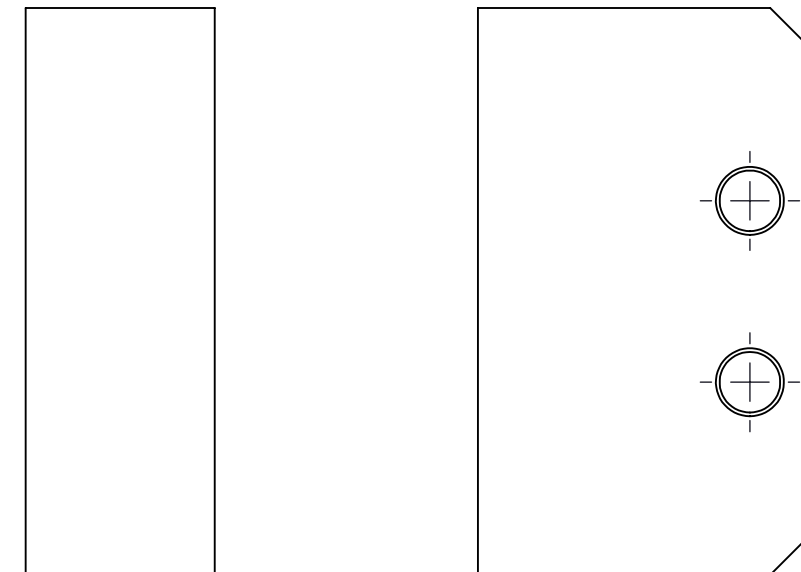
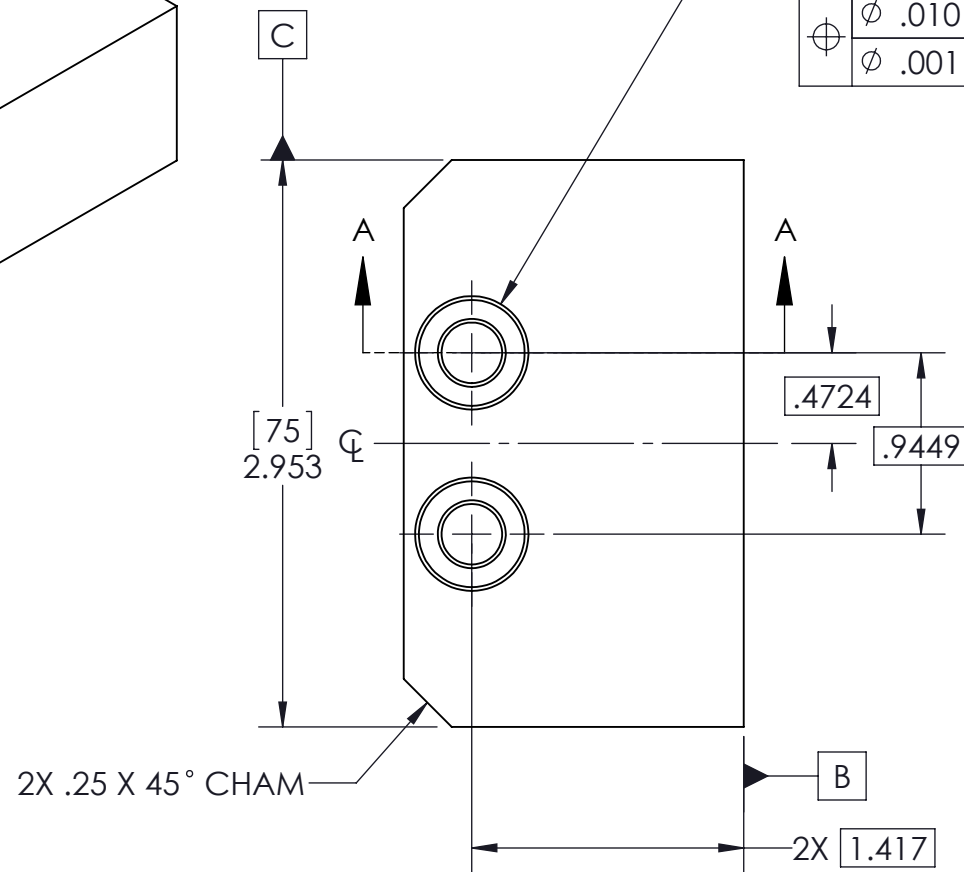
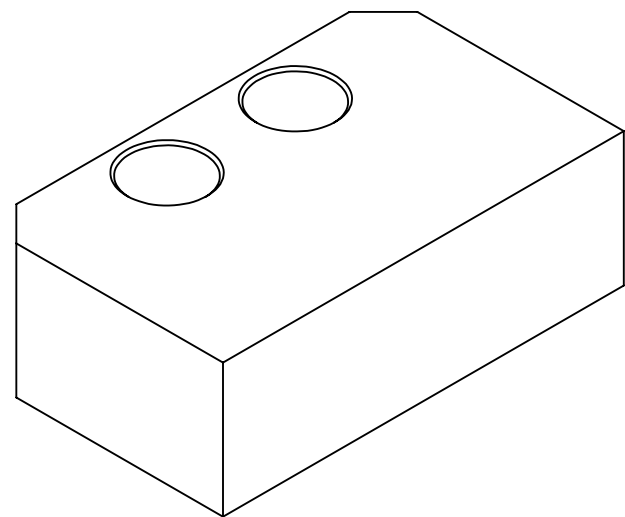
FINISHED PART



SECTION A-A
SCALE 1.5:1

2X ϕ .3155±.0002 THRU ALL
 \square ϕ .55 ∇ .740
 \sphericalangle ϕ .59 X 90°, NEAR SIDE
 \sphericalangle ϕ .35 X 90°, MID SIDE
 \sphericalangle ϕ .35 X 90°, FAR SIDE

| | | | | |
|--------|-------------|---|---|---|
| ϕ | ϕ .010 | A | B | C |
| ϕ | ϕ .001 | A | | |



| TOLERANCES | |
|------------|--------------|
| METRIC | INCH |
| X ± 1.0 | X ± 0.1 |
| .X ± 0.3 | .X ± 0.05 |
| .XX ± 0.13 | .XX ± 0.01 |
| | .XXX ± 0.005 |

UNLESS OTHERWISE NOTED
ANGULAR DIMENSIONS ± 0.5°

INCH
PROPRIETARY AND CONFIDENTIAL
 THE INFORMATION CONTAINED IN THIS DRAWING IS THE SOLE PROPERTY OF FIFTH AXIS, INC. ANY REPRODUCTION IN PART OR AS A WHOLE WITHOUT THE WRITTEN PERMISSION OF FIFTH AXIS, INC. IS PROHIBITED.

APPROVALS
 DRAWN BY: ADAM L. 2/17/2015
 MFG. ENG.
 QA ENG.
 ENG. MGR.
 MATERIAL: 2
 FINISH: 3
 WEIGHT: 207.712 LBS

5thAXIS[®]
 7140 ENGINEER ROAD, SAN DIEGO, CA 92111
 PH (858) 505-0432 FX (858) 505-0432

CUSTOMER: _____
 DESCRIPTION: ALUMINUM SOFT JAW, V75100 VISE
 SIZE: B PART NO. VAJ75
 DO NOT SCALE DRAWING SCALE 1:1 SHEET 1 OF 1