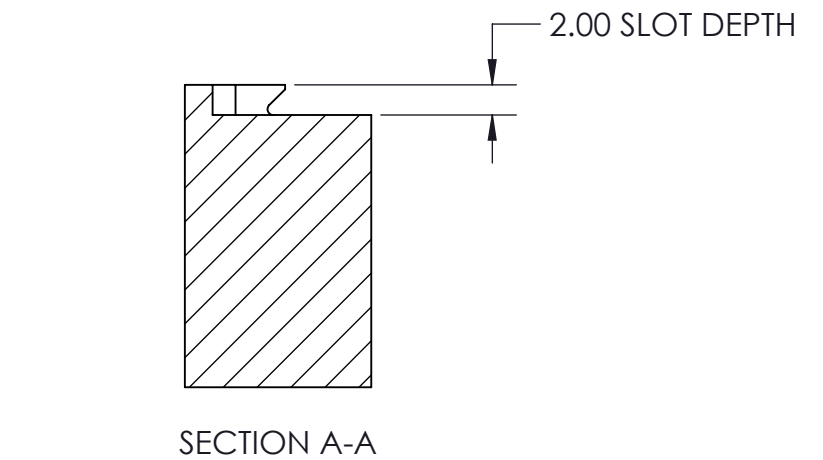
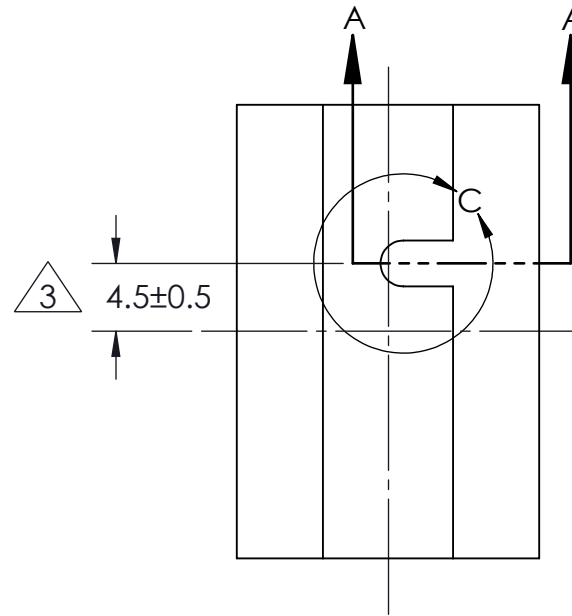
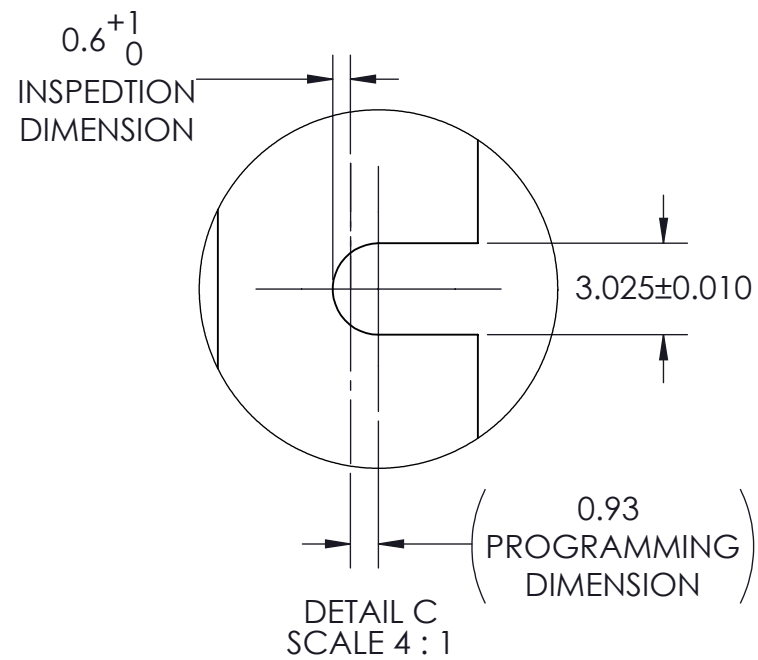
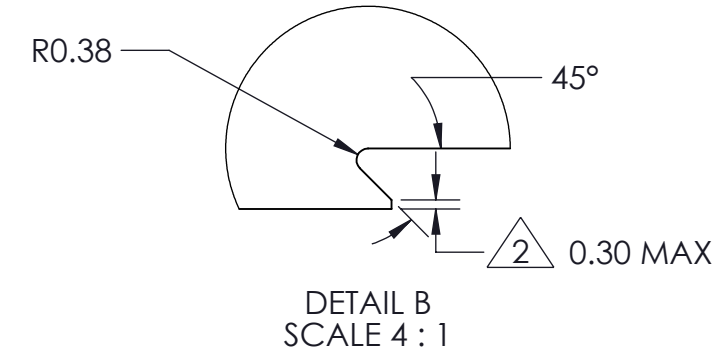
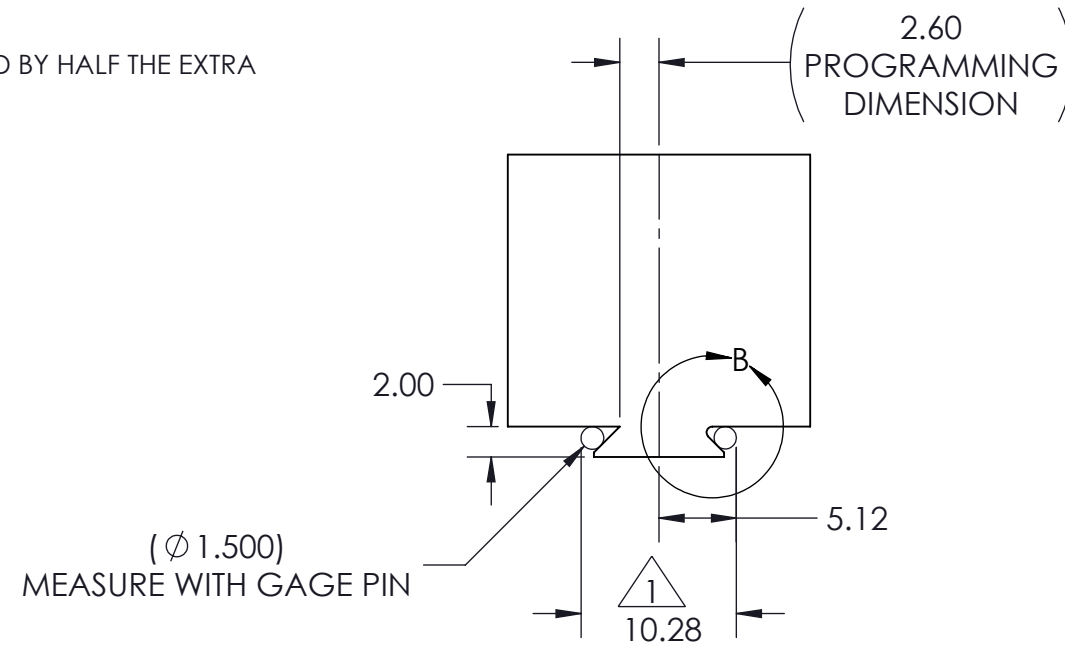


NOTES:

- 1. DOVETAIL WIDTH WILL NOT CHANGE WITH VARYING DOVETAIL DEPTH
- 2. MACHINE EDGE BREAK ON DOVETAIL POINT
- 3. IF STOCK IS OVERSIZED, THE TOLERANCE IS INCREASED BY HALF THE EXTRA STOCK

DM12 DOVETAIL STOCK PREPARATION



MILLIMETER <small>DRAWN IN ACCORDANCE WITH ASME Y14.5-2009</small> PROPRIETARY AND CONFIDENTIAL <small>THE INFORMATION CONTAINED IN THIS DRAWING IS THE SOLE PROPERTY OF FIFTH AXIS, INC. ANY REPRODUCTION IN PART OR AS A WHOLE WITHOUT THE WRITTEN PERMISSION OF FIFTH AXIS, INC. IS PROHIBITED.</small>	TOLERANCES <small>UNLESS OTHERWISE SPECIFIED</small> X ± 1 .XX ± 0.13 .X ± 0.3 ANGULAR ± 0.5°	APPROVALS DRAWN BY: Gilles M. 09/19/17 MANUFACTURING		 <small>WWW.FIFTHAXIS.COM 7140 ENGINEER ROAD SAN DIEGO, CA 92111 P (858) 505-0432 F (858) 505-9344</small>
	<small>THIRD ANGLE PROJECTION</small> 	QUALITY FINAL	DESCRIPTION: DM12 DOVETAIL STOCK PREP SIZE: B PART NO.: DSP-DM12 <small>DO NOT SCALE DRAWING SCALE 2:1 WEIGHT: SHEET 1 OF 1</small>	